

**Minutes
Street Committee Meeting
Tuesday, March 1, 2022**

The Street Committee Meeting was held Tuesday, March 1, 2022 at 5:00 P.M. in the Raymond Pridgen Auditorium. The following were notified of the time, date, and place of the meeting: Council Chairwoman Pat Phillips, Council Members Carolyn Wilson, Mayo C. Phillips, the City Staff, and the press. Present at the meeting were the following: Council Chairwoman Pat Phillips, Council Members Carolyn Wilson, Mayo C. Phillips, Public Works Director Tarus Gilchrist, City Clerk Felicia Sawyer.

1. Call Meeting To Order & Welcome: Council Chairwoman Phillips called the meeting to order at 5:00 and welcomed all present.

Council Member Carolyn Wilson opened the meeting with prayer.

2. Disclosure that local media has been informed of meeting pursuant to South Carolina Freedom of Information Act: Committee Chairwoman Phillips stated the local media had been contacted regarding the time, date, and place of the Street Committee meeting for March 1, 2022.

3. Re: Equipment

Chairwoman Phillips recognized Street/Sanitation Director Tarus Gilchrist. Gilchrist stated the department would also need a truck and trailer to haul the track hoe once it is purchased. \$100,000.00 has been set aside for the purchase of a back hoe but with price increases the total has since changed. Gilchrist stated the machine would last up to 30 years if properly maintained.

Mayor Pro Tem / Committee Chairwoman Phillips made a motion to accept and recommend to Council the purchase price up to \$170,000.00. Council Wilson seconded the motion.

Council Member Wilson stated the equipment could possibly be rented to other towns.

Gilchrist stated the City would not be able to purchase a Jetter truck at this time. He stated a small vector truck could possibly be obtained.

Gilchrist stated trash pickup is going well with the exception of people stealing garbage cans.

Page Two
Minutes - Street Committee Meeting
Tuesday, March 1, 2022

Gilchrist stated he would be requesting some vehicles for the department, including a garbage truck.

Gilchrist also requested pay increases for his employees.

Gilchrist stated trucks are parking on City property without permission and there should be an Ordinance for no parking on City property.

Gilchrist stated a low boy and trailer could be obtained from the 1033 program. This has been in discussion with the Police Department for some time now.

4. Adjournment:

Mayor Pro Tem Phillips made a motion to adjourn. Council Member Wilson seconded the motion.

Mayor Pro Tem/Committee Chairwoman Pat Phillips

ATTEST:

Felicia J. Sawyer, City Clerk



3504 N Rocky River Rd
Monroe, NC 28110
(800) 438-1933

30 Stoddard Garden Ct
Fountain Inn, SC 29644
(864) 409-1143

2820 Superior Dr
Wake Forest, NC 27587
(800) 438-1933

2709 Faith Industrial Dr., Suite 200
Buford, GA 30518
(678) 785-6300

15 Ready Mix Rd
London, KY 40741
(606) 878-7800

5576 Export Blvd
Garden City, GA 31408
(912) 964-8249

Ship To: SY215C

Invoice To: THE IRONPEDDLERS
30 STODDARD GARDEN CT
FOUNTAIN INN SC 29644

Branch 05 - GREENVILLE		
Date 02/04/2022	Time 14:36:42 (O)	Page 1
Account No P005	Phone No	Est No 01 Q00121
Ship Via	Purchase Order	
Tax ID No		
JOSEPH WOODS		Salesperson JW

EQUIPMENT ESTIMATE - NOT AN INVOICE

Description	** Q U O T E **	EXPIRY DATE: 02/12/2022	Amount
Stock #: 001041	Serial #: SY021ECB79278		167000.00
New 2021 SY SY215C			
New 2021 SANY SY215C SANY SY215C			
SOLEBEE'S MAIN PIN HYD THUMB			7950.00
SOLESBEE'S 42" BUCKET			6450.00
Miscellaneous Charges/Credits			
=====			
SC MAX TAX	Qty: 1	Price: 500.00	500.00
REBATE	1	13600.00	13600.00-
		Subtotal:	168300.00
Authorization: _____		Quote Total:	168300.00

Thank You For Your Business!

SY215C

PRODUCT SPECIFICATIONS



STANDARD FEATURES

Powerful, robust and reliable powertrain and hydraulic components for long life in the most demanding applications

Optimized positive flow control hydraulics improve operating efficiency by up to 5% and fuel efficiency by up to 10%

Gross Power
122 kW / 163.6 hp

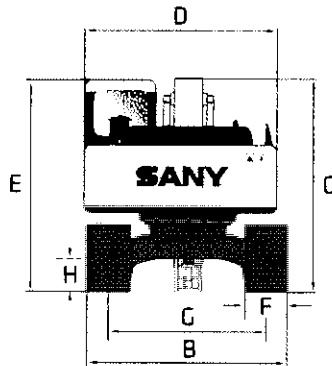
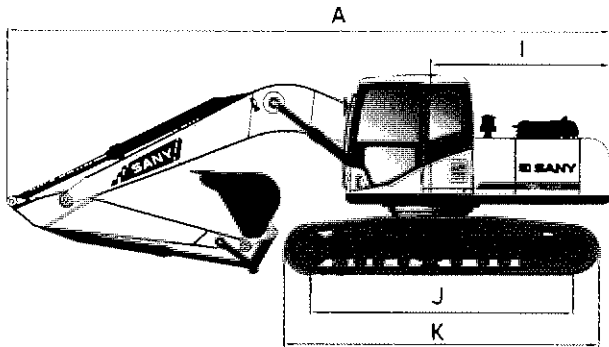
Dig Depth
6600 mm / 21' 8"

Operating Weight
23550 kg / 51,919 lb

Bucket Breakout
127.0 kN / 28,551 lbf

SIZE || PRODUCT SPECIFICATIONS

DIMENSIONS



DIMENSIONS

Boom Length	5700 mm	18' 8"
Stick (Arm) Length	2925 mm	9' 7"
A Transport Length	9728 mm	31' 11"
B Transport Width	3180 mm	10' 5"
C Transport Height	3370 mm	11' 1"
D Upper Structure Width	2710 mm	8' 11"
E Cab Height	3050 mm	10' 0"
F Track Width (standard shoe)	800 mm	31"
G Track Gauge	2380 mm	7' 10"
H Ground Clearance (minimum)	480 mm	19"
I Tail Swing Radius	2890 mm	9' 6"
J Track Length on Ground	3640 mm	11' 11"
K Track Length	4450 mm	14' 7"

Powerful, robust and reliable powertrain and hydraulic components

TECHNICAL SPECIFICATIONS

Operating Weight	23550 kg	51,919 lb
Ground Pressure	36.3 kPa	5.3 psi

Engine

Displacement	6.7 L	408.9 in ³
Gross Power	122 kW	163.6 HP

Cummins QSB6.7

Hydraulics

Main Hydraulic Pump

Operating Flow (maximum)	444.0 L/min	117.3 gal/min
Operating Pressure (maximum)	34.3 MPa	4975 psi
Power Boost Pressure (maximum)	37.3	5410 psi

Positive Flow Control with Pilot Control
Axial Piston - Variable Displacement

Travel Motor

Travel Pressure (maximum)	34.3 MPa	4975 psi
Travel Speeds (maximum)	3.1 / 5.3 km/hr	1.9 / 3.3 mph
Travel Effort (maximum)	180.0 kN	40,466 lbf
Grade Capability (maximum)		35°

Axial Piston with Park Brake

Swing Motor

Swing Pressure (maximum)	27.5 MPa	3989 psi
Swing Speed (maximum)		10.9 RPM

Axial Piston with Swing Brake

Undercarriage (standard)

Track Shoe width (standard)	800 mm	31"
Track Rollers (per side)		9
Carrier Rollers (per side)		2

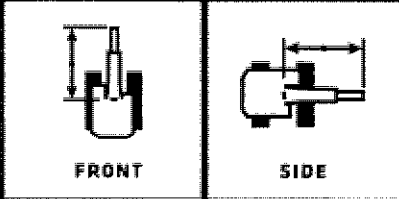
Steel Track

SERVICE REFILL CAPACITIES

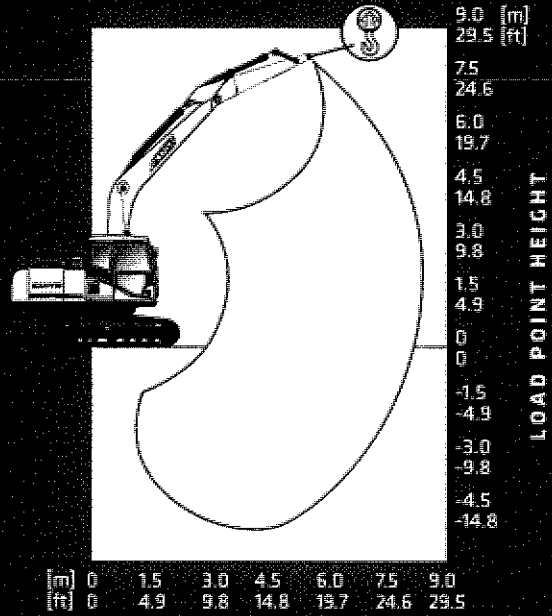
Fuel Tank Capacity	340.0 L	89.5 gal
DEF Tank Capacity	19.0 L	5.0 gal
Hydraulic Tank Capacity	230.0 L	60.5 gal
Engine Oil Capacity	27.0 L	7.1 gal
Cooling System Capacity	27.6 L	7.3 gal

SANY LIFTING PERFORMANCE

Standard 5700 mm (18' 8") Boom
 Standard 2925 mm (9' 7") Arm
 Standard 800 mm (31") Track Shoes
 No Bucket



Ratings are based on ISO 10567:2007. Lift capacity does not exceed 75% of tipping load with the machine on firm, level ground or 87% of hydraulic lifting capacity.



LOAD POINT HEIGHT	3.0 m 9.8 ft		4.5 m 14.8 ft		6.0 m 19.7 ft		7.5 m 24.6 ft		MAX REACH	
	⊕	⊖	⊕	⊖	⊕	⊖	⊕	⊖	⊕	⊖
7.5 m 24.6 ft					4267 kg*	4267 kg*			4746 kg*	4746 kg*
6.0 m 19.7 ft					4617 kg*	4617 kg*			4916 kg*	4950 kg
4.5 m 14.8 ft					5159 kg*	5159 kg*	4936 kg*	4107 kg	4959 kg*	3754 kg
3.0 m 9.8 ft			7583 kg*	7583 kg*	6008 kg*	5480 kg	5310 kg*	4004 kg	5155 kg*	3357 kg
1.5 m 4.9 ft			9288 kg*	7705 kg	6893 kg*	5240 kg	5763 kg*	3887 kg	5036 kg	3354 kg
0 m 0 ft	6861 kg*	6861 kg*	10286 kg*	7429 kg	7554 kg*	5069 kg	5767 kg	3799 kg	5161 kg	3419 kg
-1.5 m -4.9 ft	10946 kg*	10946 kg*	10532 kg*	7346 kg	7790 kg*	4994 kg	5737 kg	3771 kg	4833 kg	3694 kg
-3.0 m -9.8 ft	14385 kg*	13964 kg	10058 kg*	7401 kg	7504 kg*	5023 kg			6472 kg*	4345 kg
-4.5 m -14.8 ft	11956 kg*	11956 kg*	8474 kg*	7615 kg					6930 kg*	6066 kg

* Indicates load limited by hydraulic lifting capacity